



FISHERIES DISTRICT 2 NEWSLETTER

201 East 5th Street, Mountain Home, AR 72653 • 877-425-7577

Jeremy Risley, District Fisheries Supervisor Email: Jeremy.Risley@agfc.ar.gov

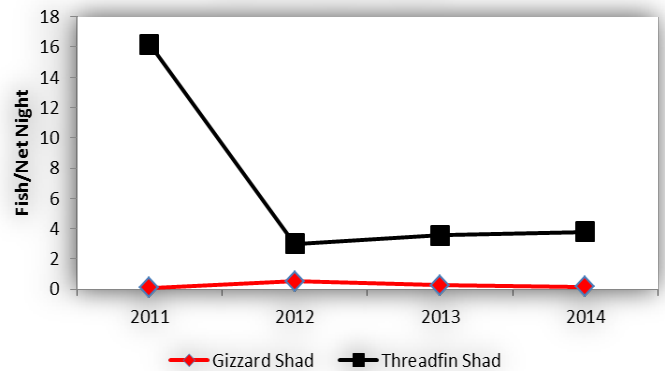
Paul Port, Fisheries Management Biologist Email: Paul.Port@agfc.ar.gov | Cody Wyatt, Fisheries Biologist Email: Christopher.Wyatt@agfc.ar.gov

2014 Shad Netting

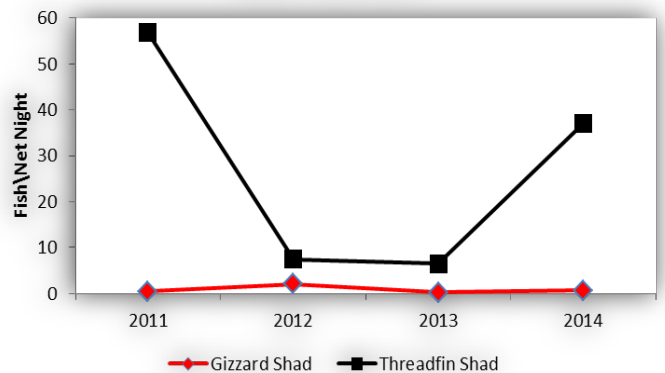
We conducted our annual shad sampling on Bull Shoals and Norfolk Lakes in September and October. We deployed gill nets to get estimates of shad abundance. This data can be used to look at trend data over time. It also helps us speak to any growth, fish condition, or other sportfish population issues that may arise.

In past years, only one month was sampled. However, we wanted to get a better look at the shad population so we sampled two months, this year. Each month, we set 10 gill nets over 3 nights in the upper, middle, and lower sections of each lake for a total of 60 net nights per month. On Bull Shoals Lake we collected a total of 3.8 threadfin shad/net night (3.7 inch average) and 0.15 gizzard shad/net night (4.0 inch average). On Norfolk Lake we collected a total of 18.5 threadfin shad/net night (3.8 inch average) and 0.4 gizzard shad/net night (3.9 inch average). These numbers were comparable to the previous two sampling years which is expected during normal or low water years. During high water events like 2011, there is excellent threadfin shad production.

Bull Shoals Lake



Lake Norfolk



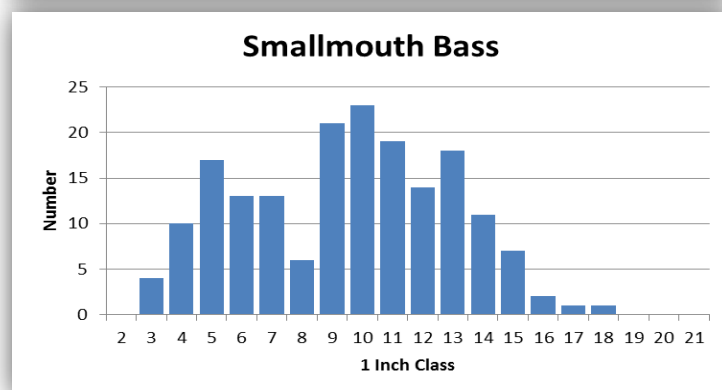
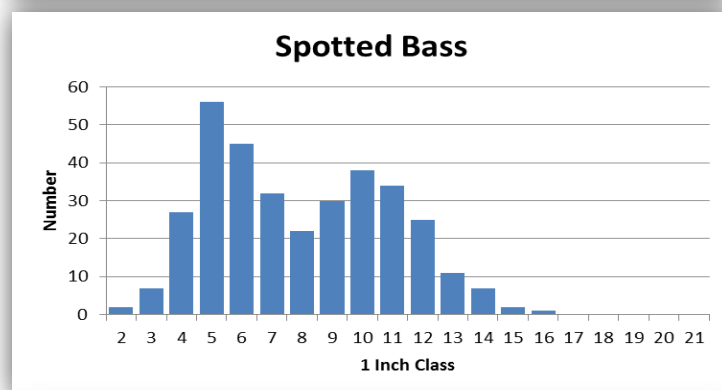
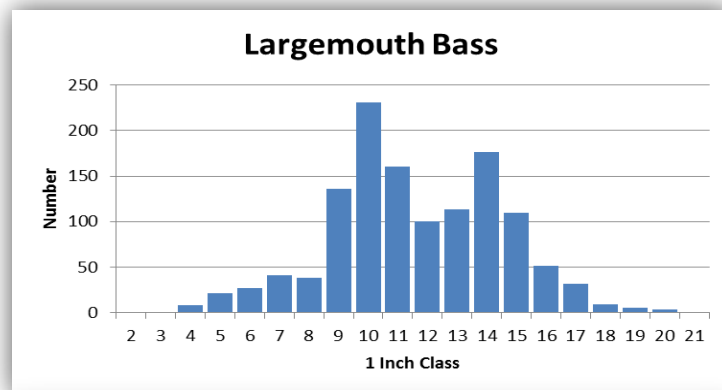
The above graphs show threadfin shad and gizzard shad catch rates on Bull Shoals and Norfolk Lakes over the past 4 years.

2014 Annual Fall Bass Samples

This year we decided to conduct our first annual fall electrofishing samples for black bass on Bull Shoals and Norfolk Lakes in November and December. We want to start collecting bass trend data in the fall in addition to our annual spring samples. This allows us to have data to compare year to year in the event we are not able to sample in the spring due to high water levels or other circumstances.

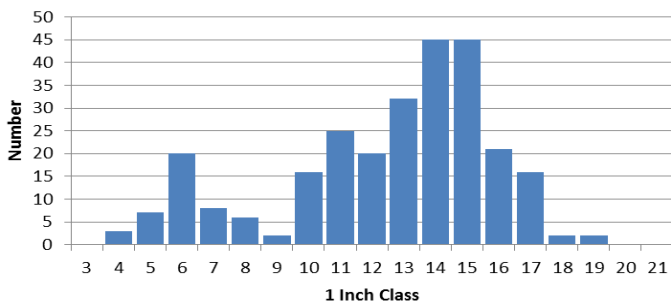
Before we dive into the data, we wanted to mention a few things about fall sampling. First, fewer black bass will be collected in the fall compared to the spring. In the spring, a lot of the black bass are shallow making them vulnerable to electrofishing. In the fall, a percentage of the black bass are in deeper water making them less vulnerable to electrofishing. Second, the average size of black bass is typically smaller. In the spring, a higher percentage of the bigger bass are near the shore for reproductive reasons. In the fall, these fish are typically in deeper water. Finally, sampling in the fall allows us to assess the condition of the black bass. We collect weights of each bass sampled in the fall. We do not collect weights in the spring because weights are impacted by reproductive reasons.

On Norfolk Lake, we sampled 48 different sites throughout the lake on November 18-20, 2014. Over 3 nights of sampling, we electrofished for a total of 8 hours (pedal down time). We collected 1,262 largemouth bass, with an average size of 12.5 inches. The longest largemouth bass collected was 20.2 inches. We sampled 339 spotted bass (average size of 8.2 inches) and 180 smallmouth bass (average size of 9.2 inches). The longest spotted bass collected was 16.3 inches and the longest smallmouth bass collected was 18.5 inches.

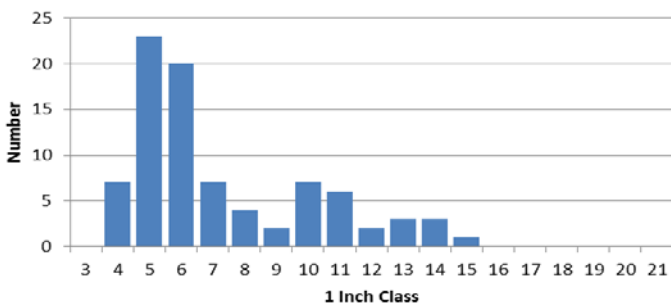


On Bull Shoals Lake, we only sampled the middle portion of the lake because water temperatures were not conducive to sampling (thanks Polar Vertex!!). On December 2, 2014, we sampled 16 sites for a total of 2.7 hours of pedal down time. We collected 270 largemouth bass with an average length of 13.0 inches. The longest largemouth bass collected was 19.2 inches. We sampled 85 spotted bass (average length of 7.8 inches) and 64 smallmouth bass (average length of 8.0 inches). The longest spotted bass collected was 15.6 inches and the longest smallmouth bass collected was 13.9 inches.

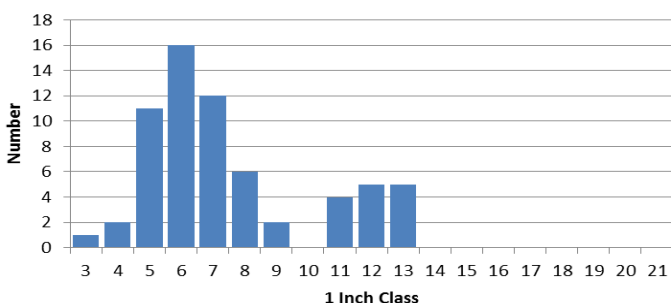
Largemouth Bass



Spotted Bass



Smallmouth Bass

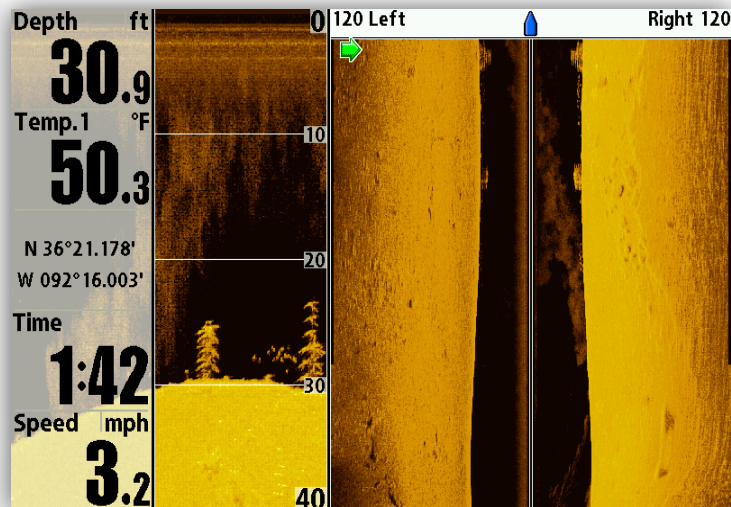


Lake Norfolk Artificial Fish Habitat Pictures from Sonar

Over the summer, we placed artificial fish attractors at 5 locations in Norfolk Lake. The fish attractors were purchased from MossBack Fish Attractors (<http://www.mossbackfishhabitat.com/>) in Rogers, Arkansas. At each of the 5 locations, we placed five 3-prong structures. One of those structures had an additional 1-prong structure attached to the top of it to make it taller (an additional 5 foot tall). Over the Christmas break, Jeremy was fishing Lake Norfolk and was able to capture some screen shots of the artificial fish attractors on his down and side imaging sonar.

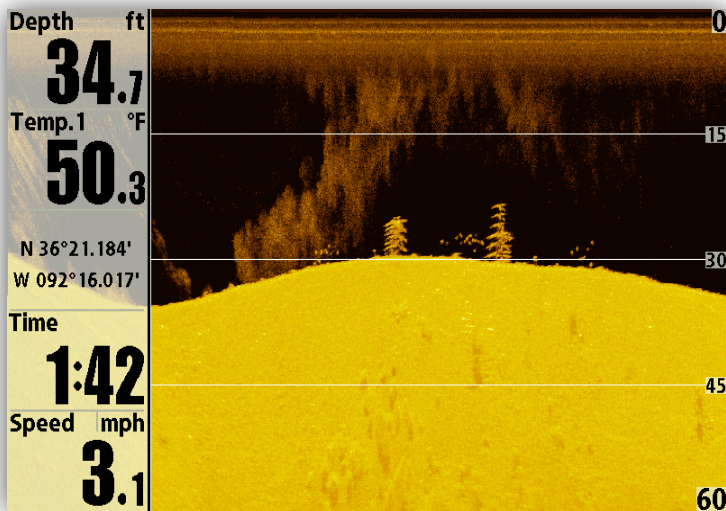
Picture 1:

This picture is showing two of the artificial structures using down and side imaging. You can see fish hanging out in between the structures.



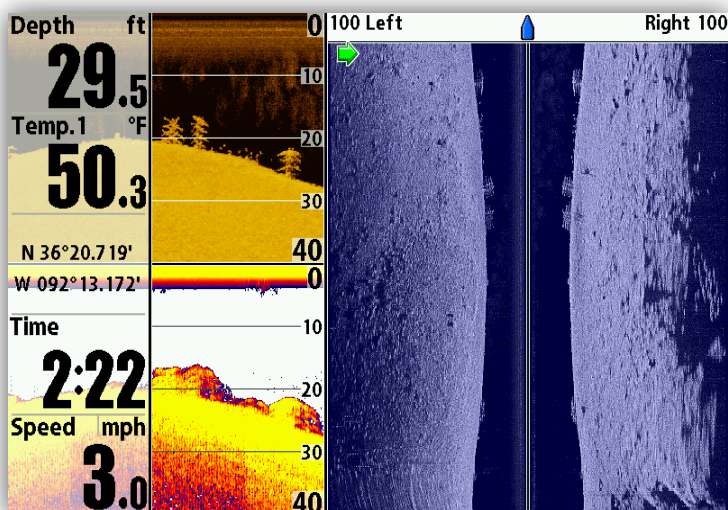
Picture 2:

This picture shows the same two artificial structures but using down imaging only. You can see fish all around both structures. You can also see the added structure to the top of the structure on the right.



Picture 3:

This is showing three artificial structures at a different location. In this picture, you can see the structures in down and side imaging along with 2D sonar. Again there are several fish hanging around the structures.



GPS Coordinates for the Artificial Fish Attractors in Lake Norfolk

Site	Lat/Lon	UTM
1	N 36 16 37.6 W 92 13 4.8	15 S 570232 4014969
2	N 36 16 27.2 W 92 13 56.9	15 S 568935 4014637
3	N 36 20 43.1 W 92 13 09.6	15 S 570052 4022531
4	N 36 20 53.7 W 92 15 59.9	15 S 565805 4022826
5	N 36 21 10.9 W 92 16 00.1	15 S 565796 4023356

District Two's 2014 Warmwater Fish Stockings

From this point on, the final newsletter for each year will include all the warmwater stockings for that year. This will not include any of the trout stockings for the tailwaters even though they are in D-2. If you would like to see those stockings, please contact the Trout Program.

There were 1,349,258 fish stocked in D-2 in 2014. Please refer to the end of this newsletter for a complete listing of the fish stocked in D-2. We want to thank all of the hatchery staff for their hard work raising most of these fish stocked in D-2.

Quick Glance at the Year

Here is a really quick glance at the number of bass, shad, and walleye we sampled this year in Bull Shoals Lake, Lake Norfolk, and Table Rock Lake. We also included the number of days we dove in Bull Shoals Lake and Lake Norfolk.

Bull Shoals Lake	
Number of Walleye Sampled	110
Number of Spring Bass Sampled	2159
Scuba Diving for Habitat Project	48 sites
Number of Shad Netted	237
Number of Fall Bass Sampled	419

Lake Norfolk	
Number of Walleye Sampled	118
Number of Spring Bass Sampled	2505
Scuba Diving for Habitat Project	5 sites, 8 dive days
Number of Shad Netted	1132
Number of Fall Bass Sampled	1781

Table Rock Lake	
Number of Walleye Sampled	
Number of Spring Bass Sampled	689
Scuba Diving for Habitat Project	
Number of Shad Netted	
Number of Fall Bass Sampled	

YouTube Page

We have created a YouTube page to house some of the GoPro videos that we made throughout the summer. We posted several videos of the habitat being placed into Norfolk Lake and some of the natural habitat that we dove around in Bull Shoals Lake. We plan on adding more videos of us sampling various fish species in the future.

Click here:

<https://www.youtube.com/channel/UC9KvbJKTSjRUjM7uV2YnDeA>

We Want To Say Thank You!!

We want to personally say thank you to all the anglers that fished in District 2 in 2014. Without all of you, our job wouldn't be possible. We really enjoyed meeting a wide diversity of anglers that enjoy fishing in the area. We appreciate what all of you do for the area and the knowledge that we can gain from all of you.

We hope to meet more anglers and continue to work with all of you to try to improve the fishing in the area in 2015.

Again, thank you!!

Newsletter Distribution and Ideas

We are working on our newsletter distribution list. If you know anyone that might be interested in receiving the newsletter, please send their contact info to jtrisley@agfc.state.ar.us. Please feel free to contact us with any ideas for newsletter topics that you would like to see us talk about.

Newsletter wrote by Paul Port

2014 D-2 Stockings minus Trout stockings

Lake/River	Species Stocked	Size	Number Stocked
Norfolk	Black Crappie	Fingerlings	203,220
	Blue Catfish	Yearlings	22,210
	Channel Catfish	Catchable	8,460
	Channel Catfish	Yearlings	22,000
	Hybrid Striped Bass	Fingerlings	48,185
	Striped Bass	Fingerlings	134,865
	Walleye	Fingerlings	200,000
Bull Shoals Lake	Black Crappie	Adult	200
	Black Crappie	Fingerlings	300,000
	Blue Catfish	Yearlings	45,790
	Channel Catfish	Catchable	300
	Channel Catfish	Yearlings	50,452
Table Rock Lake	Walleye	Fingerlings	228,076
	Channel Catfish	Yearlings	2,000
Ramsey Slough	Walleye	Fingerlings	60,200
	Blue Catfish	Yearlings	450
Amon's Lake	Channel Catfish	Catchable	606
	Channel Catfish	Catchable	302
Amon's Lake (Derby)	Channel Catfish	Catchable	450
Ar Baptist Boy Ranch Pond	Channel Catfish	Catchable	300
Bear Creek	Channel Catfish	Catchable	300
Bear Creek Pond (Derby)	Channel Catfish	Catchable	300
Big Creek (Searcy Co.)	Channel Catfish	Catchable	300
Briarcliff Lake	Channel Catfish	Catchable	150
Buffalo River	Channel Catfish	Catchable	1,000
Cedar Ridge Pond (Derby)	Channel Catfish	Catchable	203
Cove Creek Lake (Derby)	Channel Catfish	Catchable	200
Crooked Creek	Channel Catfish	Catchable	2,400
Crown Lake	Channel Catfish	Catchable	1,950
Crown Lake (Derby)	Channel Catfish	Catchable	302
Diamond Lake	Channel Catfish	Catchable	360
Future Fuel Lake (Derby)	Channel Catfish	Catchable	500
Future Fuel Lake (Derby)	Channel Catfish	Catchable	250
Gunner Pool	Channel Catfish	Catchable	302
Harris Pond (Derby)	Channel Catfish	Catchable	150
Harrison City Lake (Derby)	Channel Catfish	Catchable	300
Harrison City Lake (Derby)	Channel Catfish	Catchable	250
Little Red River	Channel Catfish	Catchable	300
Lyon College Pond	Channel Catfish	Catchable	300

Newark City Lake (Derby)	Channel Catfish	Catchable	200
Newark City Pond	Channel Catfish	Catchable	300
Piney Creek	Channel Catfish	Catchable	300
Pioneer Lake	Channel Catfish	Catchable	200
Rowe Lake	Channel Catfish	Catchable	200
Rowe Lake (Derby)	Channel Catfish	Catchable	500
Stinger Lake	Channel Catfish	Catchable	1,150
Strawberry River	Channel Catfish	Catchable	1,160
Sylamore Creek	Channel Catfish	Catchable	302
Tahkodah Camp	Channel Catfish	Catchable	300
Tahkodah Camp (Derby)	Channel Catfish	Catchable	300
White River	Channel Catfish	Catchable	6,163
Whitstine Lake	Channel Catfish	Catchable	300

Total Stockings of in District 2 Minus Trout Stockings **1,349,258**